

# Clausing Radial Drills

**Heavy-Duty, Large Capacity Radial Drills**



**Drilling capacities up to  $2\frac{3}{16}$ " in steel,  $2\frac{3}{4}$ " in cast iron,  
Tapping capacities up to 2" in steel,  $2\frac{3}{8}$ " in cast iron and  
Boring capacities up to 5" in steel,  $7\frac{3}{8}$ " in cast iron**

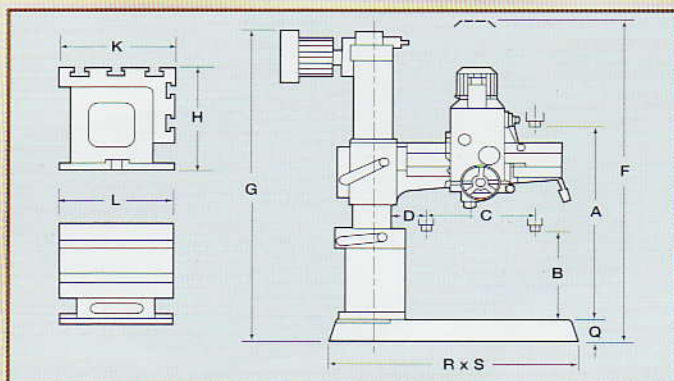
**Simply the Best**

# Clausing Radial Drills

**Models**  
**CL720A**  
**CL820A**  
**CL920A**



## Dimensions:



## Capacities:

Model	CL720A	CL820A	CL920A
<b>Capacity</b>			
Drilling In Steel	1-1/2"	1-1/2"	1-1/2"
Drilling In Cast Iron	2"	2"	2"
Tapping In Steel	1"	1"	1"
Tapping In Cast Iron	1-1/4"	1-1/4"	1-1/4"
Boring In Steel	2-3/4"	2-3/4"	2-3/4"
Boring In Cast Iron	4-1/16"	4-1/16"	4-1/16"

## Features and Standard Equipment:

- Limit safety switch for safe operation
- High speed gears are made of Nickel-Chrome Steel and are heat-treated and ground for durability.
- Powerful 2 Hp spindle drive motor for heavy-duty cutting
- Extra auxiliary dial for spindle feed depth indication, allows review of spindle feed depth, .0394" to 7.874".
- Special spindle balance mechanism, superior to traditional balance mechanism and extends Balance Spring life.
- Coolant System
- Low volt and overload protection
- Tool kit and manuals

## Specifications:

Model	CL720A	CL820A	CL920A
<b>Working Area</b>			
Column Sleeve Dia (E)	8-1/4"	8-1/4"	8-1/4"
Column Face to Spindle Center			
Maximum (D+C)	29-1/2"	33-1/2"	37-3/8"
Minimum (D)	8-5/8"	8-5/8"	8-5/8"
Spindle Head Travel (C)	20-7/8"	24-7/8"	28-3/4"
Arm Vertical Travel (A-B)	23-13/16"	25-9/16"	25-9/16"
Arm Rotation (Right & Left)	180°	180°	180°
Base Surface to Spindle End			
Maximum (A)	41-3/4"	47-5/8"	47-5/8"
Minimum (B)	9-5/8"	13-3/4"	13-3/4"
Baseplate Working Surface	35 1/2" x 25 3/16"	35 1/2" x 25 3/16"	35 1/2" x 25 3/16"
Box Table Area			
Top (L x K)	23 3/8" x 17 1/2"	23 3/8" x 17 1/2"	23 3/8" x 17 1/2"
Side (L x H)	23 3/8" x 15"	23 3/8" x 15"	23 3/8" x 15"
Base Dimensions			
Floor Area (R x S)	49 5/8" x 25 3/16"	49 5/8" x 25 3/16"	49 5/8" x 25 3/16"
Height (Q)	6 9/32"	6 9/32"	6 9/32"
<b>Drilling Head</b>			
Spindle Taper	MT#4	MT#4	MT#4
Spindle Stroke	8-1/4"	8-1/4"	8-1/4"
Quill Diameter	2.953"	2.953"	2.953"
Spindle Speeds (rpm)	88, 154, 282, 455, 796 1500 (all models)		
Number of Spindle Speeds	6	6	6
Spindle Feed Rate (in/rev.)	0.002", 0.0035", 0.006" (all models)		
Number of Feeds	3	3	3
Spindle Drive Motor	2 hp	2 hp	2 hp
Elevating Motor	1 hp	1 hp	1 hp
Coolant Pump Motor	1/8 hp	1/8 hp	1/8 hp
<b>Overall Measurements and Weight</b>			
Maximum Machine Height (F)	85-7/16"	91-3/8"	91-3/8"
Shipping Dim. (LxWxH)	64" x 32" x 85"	66" x 32" x 86"	71" x 32" x 86"
Net Weight	2640 lbs	2860 lbs	2970 lbs
Shipping Weight	2970 lbs	3190 lbs	3300 lbs

# Clausing Radial Drills

## Models CLC1250 CLC1600



### Features and Standard Equipment:

- Equipped with hydraulic Step-by-Step clamping system, with proper selection on push button switch. Column, arm, gear box can be clamped/released independently. Very easy to be operated, and tools will always stay at the same point after tools shifting.
- Gears in gear box are cooled by oil cycled by an oil pump to minimize gear wear.
- Friction type disc clutch absorbs impact force caused by vertical movement of spindle, and protects all transmission units inside gear box. With quick spindle return, the clutch will help speed-up the tapping operation.
- Specially designed manual tools ejector (drift). (Automatic tools ejector is optional.)
- Special arm elevating safety device is provided to prevent arm from falling down abruptly after years of usage.
- Speed preselection, speed change is hydraulically actuated. Fast and very easy to operate.
- Coolant System
- Tool kit and manuals

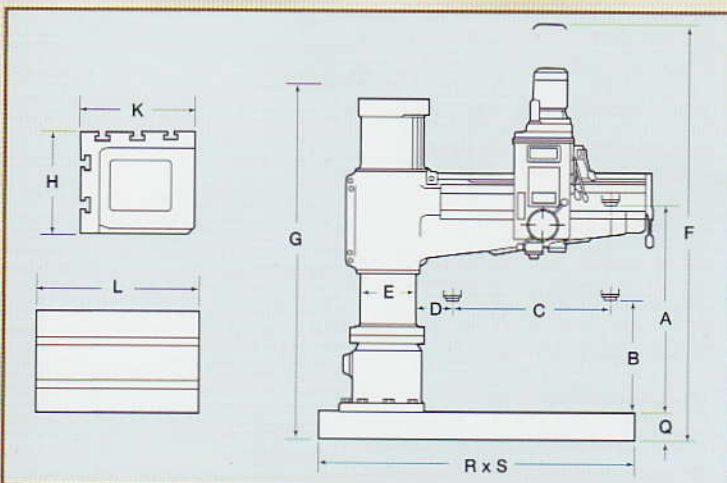
### Specifications:

Model	CLC1250	CLC1600
<b>Working Area</b>		
Column Sleeve Dia (E)	13-3/4"	13-3/4"
Column Face to Spindle Center		
Maximum (D+C)	49-1/4"	63"
Minimum (D)	13-3/4"	13-3/4"
Spindle Head Travel (C)	34-7/16"	49-1/4"
Arm Vertical Travel (A-B)	34-5/8"	34-5/8"
Arm Rotation (Right & Left)	180°	180°
Base Surface to Spindle End		
Maximum (A)	48"	48"
Minimum (B)	13-3/8"	13-3/8"
Baseplate Working Surface	55-1/8" x 38-9/16"	55-1/8" x 38-9/16"
Box Table Area		
Top (L x K)	24-7/8" x 19-5/8"	24-7/8" x 19-5/8"
Side (H x L)	24-7/8" x 19-5/8"	24-7/8" x 19-5/8"
Base Dimensions		
Floor Area (R x S)	80" x 38-9/16"	93-11/16" x 38-9/16"
Height	8-1/16"	8-1/16"

<b>Drilling Head</b>		
Spindle Taper	MT#5	MT#5
Spindle Stroke	12-3/16"	12-3/16"
Quill Diameter	3.15"	3.15"
Spindle Speeds (rpm)	25-2000	25-2000
Number of Spindle Speeds	16	16
Spindle Feed Rate (in/rev.)	0.0016" x 0.126"	0.0016" x 0.126"
Number of Feeds	16	16
Spindle Drive Motor	5 hp	5 hp
Elevating Motor	2 hp	2 hp
Coolant Pump Motor	1/8 hp	1/8 hp

<b>Overall Measurements and Weight</b>		
Maximum Machine Height (F)	110-11/16"	110-11/16"
Shipping Dim. (LxWxH)	88" x 48" x 100"	102" x 48" x 100"
Net Weight	6,600 lbs	7,700 lbs
Shipping Weight	7,788 lbs	9,020 lbs

### Dimensions:

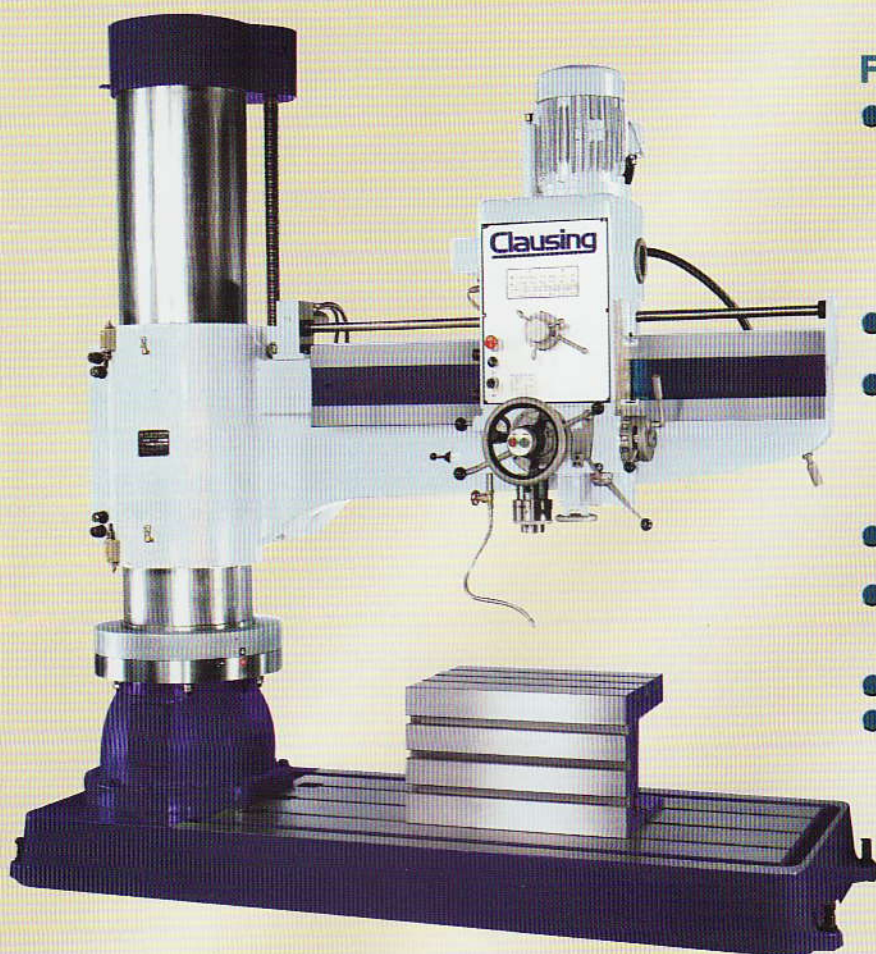


### Capacities:

Model	CLC1250	CLC1600
<b>Capacity</b>		
Drilling		
In Steel	2"	2"
In Cast Iron	2-3/8"	2-3/8"
Tapping		
In Steel	1-3/4"	1-3/4"
In Cast Iron	2-1/8"	2-1/8"
Boring		
In Steel	4-1/4"	4-1/4"
In Cast Iron	6-1/2"	6-1/2"

# Clausing Radial Drills

## Model CL1600H



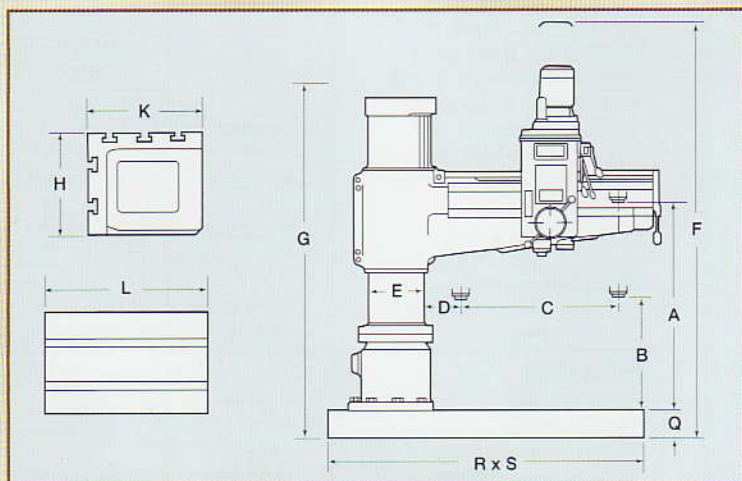
### Features and Standard Equipment:

- Equipped with hydraulic SEPARATE clamping unit. Vertical movement of arm is coordinated by an IC TIMER. With a single touch on push button switch, you can have arm unclamped then move vertically, or stop then clamp automatically. Very easy to operate, and tools will always stay at the same point after tool shifting.
- Gears in gear box are cooled by oil cycled by an oil pump to minimize gear wear.
- Friction type disc clutch absorbs impact force caused by vertical movement of spindle, and protects all transmission units inside gear box. With quick spindle return, the clutch will help speed-up the tapping operation.
- Special automatic tool eject device is supplied to allow you to change tools quickly. (No drifter is required)
- Special arm elevating safety device is provided to prevent arm from falling down abruptly after years of usage.
- Coolant System
- Tool kit and manuals

### Specifications:

Model	CL1600H
<b>Working Area</b>	
Column Sleeve Dia. (E)	17"
Column Face to Spindle Center	
Maximum (D+C)	62-5/8"
Minimum (D)	15-3/8"
Spindle Head Travel (C)	47-1/4"
Arm Vertical Travel (A-B)	35-7/16"
Arm Rotation (Right & Left)	180°
Base Surface to Spindle End	
Maximum (A)	63"
Minimum (B)	13"
Baseplate Working Surface	70-7/8" x 40-3/8"
Box Table Area	
Top (L x K)	27-5/8" x 19-5/8"
Side (H x L)	27-5/8" x 15-3/4"
Base Dimensions	
Floor Area (R x S)	97-5/8" x 41-11/32"
Height (Q)	8-1/4"
<b>Drilling Head</b>	
Spindle Taper	MT#5
Spindle Stroke	14-9/16"
Quill Diameter	3.937"
Spindle Speeds (rpm)	40-1920
Number of Spindle Speeds	12
Spindle Feed Rate (in/rev.)	0.0028" x 0.378"
Number of Feeds	6
Spindle Drive Motor	7.5 hp
Elevating Motor	2 hp
Clamping Motor	1 hp
Coolant Pump Motor	1/8 hp
<b>Overall Measurements and Weight</b>	
Maximum Machine Height (F)	124-13/16"
Shipping Dim. (LxWxH)	112" x 57" x 115"
Net Weight	10,130 lbs
Shipping Weight	10,790 lbs

### Dimensions:



### Capacities:

Model	CL1600H
<b>Capacity</b>	
Drilling	In Steel 2-3/16"
	In Cast Iron 2-3/4"
Tapping	In Steel 2"
	In Cast Iron 2-3/8"
Boring	In Steel 5"
	In Cast Iron 7-3/8"

# Clausing Radial Drills

## Models CL1100 CL1230H



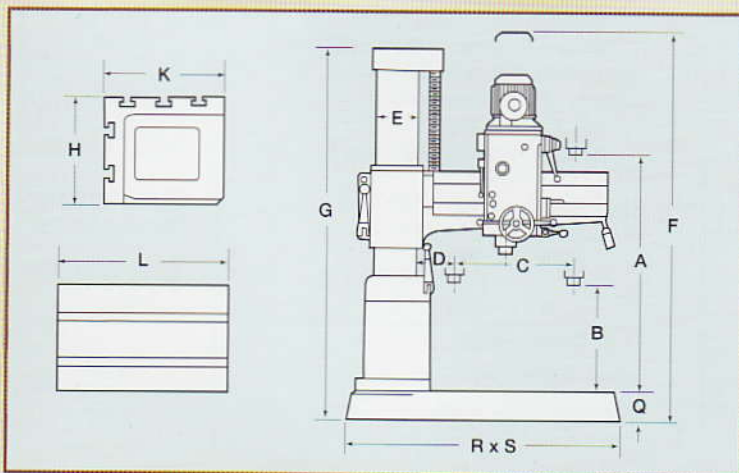
### Features and Standard Equipment:

- High-quality cast-iron arm with heat-treated and ground slides for smooth and accurate head positioning.
- The bearing bracket of gear-box is fitted with standard bearings to fit arm slide for smooth gear-box operation.
- High speed gears are made of Nickel-Chrome Steel and are heat-treated and ground for durability.
- Powerful 3 Hp, 2-speed, heavy-duty spindle drive motor.
- Overload protection device for operator safety
- The main spindle is balanced by a specially shaped spring on model CL1100 and by an adjustable block on model CL1230H.
- Coolant System
- Low volt and overload protection
- Model CL1230H is equipped with hydraulic clamping. With a push of a button you can have arm unclamped then move vertically, or stop then clamp automatically.
- Tool kit and manuals

### Specifications:

Model	CL1100	CL1230H
<b>Working Area</b>		
Column Sleeve Dia (E)	10-1/4"	11-3/16"
Column Face to Spindle Center		
Maximum (D+C)	43-5/16"	48-7/16"
Minimum (D)	9-5/8"	13-3/8"
Spindle Head Travel (C)	33-5/8"	35"
Arm Vertical Travel (A-B)	24"	34-5/8"
Arm Rotation (Right & Left)	180°	180°
Base Surface to Spindle End		
Maximum (A)	50-3/8"	54"
Minimum (B)	17"	19-3/8"
Baseplate Working Surface	48" x 28-1/8"	48" x 28-1/8"
Box Table Area		
Top (L x K)	25" x 20-1/2"	25" x 20-1/2"
Side (H x L)	25" x 16-5/16"	25" x 16-3/8"
Base Dimensions		
Floor Area (R x S)	67-7/8" x 28-1/8"	67-1/8" x 27-1/8"
Height (Q)	7-1/16"	6-1/2"
<b>Drilling Head</b>		
Spindle Taper	MT#4	MT#4
Spindle Stroke	9"	9-7/8"
Quill Diameter	3.15"	3.15"
Spindle Speeds (rpm)	44-1500	44-1500
Number of Spindle Speeds	12	12
Spindle Feed Rate (in/rev.)	0.002", 0.004" & 0.006"	0.002", 0.004" & 0.006"
Number of Feeds	3	3
Spindle Drive Motor	3 hp/2 speed	3 hp/2 speed
Elevating Motor	1 hp	1 hp
Coolant Pump Motor	1/8 hp	1/8 hp
<b>Overall Measurements and Weight</b>		
Maximum Machine Height (F)	100"	109-1/2"
Shipping Dim. (LxWxH)	74" x 34" x 87"	80" x 39" x 88"
Net Weight	3,968 lbs	4630 lbs
Shipping Weight	4,300 lbs	4960 lbs

### Dimensions:



### Capacities:

Model	CL1100	CL1230H
<b>Capacity</b>		
Drilling		
In Steel	1-5/8"	1-5/8"
In Cast Iron	2-3/16"	2-3/16"
Tapping		
In Steel	1"	1"
In Cast Iron	1-1/2"	1-1/2"
Boring		
In Steel	3-3/8"	3-3/8"
In Cast Iron	4-3/4"	4-3/4"

# Clausing Service Center



## The Clausing Service Center

Only Clausing maintains a separate Service Center designed solely to support our customers' parts and service needs! Located in Goshen, Indiana, this facility has served as an invaluable resource since 1974.

## Over 47,000 Parts

With thousands of parts in our inventory, the Clausing Service Center can provide replacement parts for machines you may have purchased thirty years ago! Lathes, drill presses, sheet metal fabricating equipment... all Clausing products are backed by the friendly and resourceful staff of our Customer Service Department.

## 95% of all parts orders are shipped within 24 hours!

In this modern age, of course, computers have brought exceptional speed and efficiency to our department. When a customer calls with a problem, our Customer Service Department can check stock immediately and initiate the shipping order while the customer is still on the phone. Within minutes, the parts order can be picked and delivered to the Shipping Department for packing and shipment. RUSH orders get top priority... we know our customers can't afford downtime!

## Service

In addition to supplying the parts that keep all our customers' equipment running, the Service Center has its own staff of highly-qualified service technicians... and they're available to solve problems all across the country.

Regular service schools are conducted for dealer personnel, to review new products and to insure that each Clausing dealer has a highly-trained service staff.

At Clausing, we're committed to service after the sale... and the Clausing Service Center demonstrates that commitment. That's the Clausing Difference.

**For parts and service, please call the Clausing Service Center.**

**(574) 533-0371**

**e-mail: [info@clausing.com](mailto:info@clausing.com)**



Clausing Industrial Inc.  
1819 North Pitcher Street  
Kalamazoo, Michigan 49007-1886  
Phone: 269-345-7155  
Fax: 269-345-5945  
Web Site: [www.clausing-industrial.com](http://www.clausing-industrial.com)  
Information: [info@clausing-industrial.com](mailto:info@clausing-industrial.com)

Distributed By:

